

COMET®

WINDMILL & WATER PRODUCTS

CUSTOMER PRICE CATALOGUE

valid November 2023

- Windmills
- Tank Stands
- Pumps



Ph: 02 6568 3711 Fax: 02 6568 3722

TABLE OF CONTENTS

1. Warranty.....	3
2. Pump Table.....	4
3. Selection Guide.....	6-7
4. C & D Pattern Windmills... ..	8
5. Windmill Pumps... ..	10
6. Packing Tubes... ..	11
7. Pump Buckets.	12
8. Tank Stands.....	13
9. Floats.....	14
10. Wheel Assembly... ..	15
11. Overhaul Kits C Pattern.....	16
12. Parts Illustration C Pattern.....	17-18
13. Overhaul Kits D Pattern	19
14. Parts Illustration D Pattern.	20-26
15.	
16. Mill Rods & Connections... ..	31
17. Pump Rods & Connections... ..	31-33
18. Clamps... ..	34

Disclaimer: Prices quoted are exclusive of GST and Freight.

Prices are correct at the time of printing but are subject to change without notice. Comet Windmills Australia will endeavour to send out new price sheets of products that change in price to include in your pricebook. If you are unsure or if you require large quantities we are more than happy to provide a special quote for your needs.



COMET

WINDMILLS AUSTRALIA

100% AUSTRALIAN OWNED & MANUFACTURED
- SINCE 1879 -

- ✓ MANUFACTURING
- ✓ INSTALLATION
- ✓ MAINTENANCE



30ft D PATTERN

*Installed for the
United States
Army at a base in
Afghanistan*

**Windmills are *still* the cheapest
long term investment for water
pumping solutions**

COMET WINDMILLS AUSTRALIA

PO Box 340, Macksville, NSW, 2447 Australia
Ph: (02) 6568 3711 Fax: (02) 656 8 3722
www.cometwindmills.com.au

1 YEAR WARRANTY

GUARANTEE AND WARRANTY TERMS

COMET WINDMILLS—ONE (1) YEAR

This conditional guarantee is valid only if the following details are adhered to. All parts received are to be checked off and accounted for within 7 days of receipt. Any claims for missing or damaged parts are to be notified within 7 days. Accounts are to be paid in full within 30 days from the date of the Tax Invoice supplied from Comet unless otherwise negotiated. Comet Windmills Australia is not responsible for the erection or installation of the mill, bore, pump or spare parts. The company manufactures and supplies genuine Comet Parts only. Comet will recommend an installer or mechanic only, but it is the responsibility of the Buyer to make the arrangements, pay for costs involved with erection/installation and ensure products are erected in accordance with manufacturers instructions. Comet Products are supplied based on the information given. The Buyer must also ensure that the manufacturers instructions are followed and that the parts are stored in a manner that will not cause the parts to rust, erode, wear or be damaged if not erected when received. This guarantee will be voided if non-Genuine parts have been used or any alterations, modifications, welding or machining has been done to original parts or on parts used to replace genuine parts.

All Comet Windmill Genuine Parts have a conditional One (1) year warranty. The company guarantees that the Comet Windmill will do all that it claims provided the pumping and wind conditions are in accordance with those specified on the Comet Pumping Table; it is properly erected on a Comet Tower in the manner described in the company's Erecting Instructions on foundations which in the Company's opinion are satisfactory; and that oiling, adjustments and maintenance have been properly attended to according to the Company's recommendations. Comet Windmills Australia only supplies products based on the information that has been supplied by the Buyer. It holds no responsibility for incorrect information or incorrect site details supplied. The company will endeavour to obtain as much information as necessary for it to identify the most suitable equipment and size.

Comet will repair or replace at its discretion any defective parts of the windmill which the company has been notified of within the 1 year period from the date of purchase provided prior approval by an authorised staff member. The defective part must be returned for inspection with all transport and other charges pre-paid.

This guarantee shall be modified if the windmill is not protected from the weather before erection and if it is not erected within three (3) months from the original date of despatch by the company. In such cases it would be necessary for special arrangements to be made with the company at its discretion.

OTHER COMET PRODUCTS—ONE (1) YEAR

All other standard Comet products are guaranteed under the same conditions as are Comet Windmills, excepting that the free supply period and the time for lodgement of claim is ONE YEAR. *These guarantees shall not extend to cover labour and other costs incurred without the company's authority, damage caused by transport to site, consequential damage, damage caused by negligence, alteration or misuse, damage caused by fire, flood, storm surge, the action of sea, tidal wave, high water or tsunami, war or warlike activity, lawful destruction, erosion, damage, loss or injury that you or anyone acting for you deliberately caused, loss, damage or liability that does not occur within the period of warranty cover.*

Conditions

The warranty does not cover alteration, improper installation, misuse, abuse or neglect on the part of the owner or installer. Warranty is also invalid in any case that the product is altered, modified or installed with non genuine parts—ensure your warranty is registered and valid by filling out your warranty registration on the following page and return to Comet Windmills Australia, PO Box 340, Macksville, NSW 2447. Do not return without speaking to a staff member first. Non return will void your warranty.

WARRANTY ONLY APPLIES TO GENUINE COMET PARTS WITH PROOF OF PURCHASE.

PUMPING TABLE

After numerous pumping tests against other makes of mills, the founders, Sidney Williams & Co, were so confident about the superiority of the Comet that in 1934 they published a challenge, which has never been accepted over 125 years. The challenge was:

'Install a Comet and any other standard mill of the same size adjacent to it so that both mills work under identical pumping and wind conditions and if, after a period of three months trial, the Comet does not pump at least 25% more water we will remove it at no cost to you.'

The pumping capacities of Comet Mills, shown in the Table, are based on the number of pumping strokes (total inches) in 19 k.m.p.h winds based on 10 hours of pumping **allowing for slip/friction**. However, the pump sizes and elevations are such that with balanced pump rods and free pressure sealing devices the mills will start pumping in light breezes of under 8 m.p.h. (12.8 k.m.p.h).

PUMP SIZE Inches mm	8ft 2.44m		10ft 3.05m		12ft 3.66m		14ft 4.27m		16ft 4.88m		18ft 5.49m		20ft 6.10m		22ft 6.71ft		24ft 7.32m		27ft 8.23ft		30ft 9.14m	
	Ft Mt	gal L	Ft Mt	gal L	Ft Mt	gal L	Ft Mt	gal L	Ft Mt	gal L	Ft Mt	gal L	Ft Mt	gal L	Ft Mt	gal L	Ft Mt	gal L	Ft Mt	gal L	Ft Mt	gal L
1¾ 44	95 29	800 3640	160 49	850 3860	220 67	870 3960	310 95	960 4360														
2 50	75 22	1060 4820	130 40	1120 5090	175 53	1130 5140	250 76	1260 5730	320 98	1800 8180	410 125	1360 7410										
2¼ 57	60 18	1340 6090	105 32	1420 6460	140 43	1430 6500	200 61	1590 7230	265 81	2290 10410	350 107	2070 9410	480 146	2300 10460								
2½ 65	52 16	1650 7500	85 26	1750 7960	120 37	1770 8050	170 52	1960 8910	220 67	2830 12870	300 91	2550 11590	415 126	2850 12960	500 152	2550 11590	650 198	2830 12870				
2¾ 70	45 14	2000 9090	72 22	2130 9680	100 31	2150 9770	140 43	2380 10820	190 58	3430 15590	250 76	3100 14090	360 110	3450 15680	430 131	3100 14090	570 174	3430 15590	715 218	3800 17280	985 300	3360 15280
3 80	38 12	2380 10820	60 18	2500 11370	85 26	2550 11590	120 37	2830 12870	160 49	4080 18550	210 64	3680 16730	305 93	4100 18640	380 116	3680 16730	490 149	4080 18550	620 189	4350 19780	840 256	3950 17960
3¼ 83	32 10	2800 12730	50 15	2950 13410	72 22	3000 13640	105 32	3300 15000	135 41	4780 21730	180 55	4300 19550	260 79	4800 21820	325 99	4300 19550	430 131	4780 21730	520 158	5100 23190	650 198	4650 21140
3½ 90	28 9	3250 14780	45 14	3450 15680	63 19	3450 15680	90 27	3850 17500	118 36	5550 25230	155 47	5000 22730	225 69	5600 25460	280 85	5000 22730	370 113	5550 25230	470 143	5900 26820	570 174	5400 24550
4 100	22 7	4200 19090	35 11	24090	48 15	4550 20680	70 21	5650 25690	94 29	7250 32960	124 38	6550 29780	180 55	7300 33190	220 67	6550 29780	280 85	7250 32960	360 110	7750 35230	445 139	7050 32050
4¼ 108					43 13	5100 23190	62 19	5050 22960	83 25	8200 37280	110 34	7350 33410	160 49	8250 37510	200 61	7400 33640	250 76	8200 37280	325 99	8750 39780	425 130	7950 36140
4½ 114					38 12	5700 25910	55 17	5350 24320	75 23	9150 41600	95 29	8250 37510	140 43	9250 42050	170 52	8250 37510	220 67	9150 41600	285 87	9800 44550	370 113	8900 40460
5 127					30 9	7050 32050	45 14	7850 35690	60 18	11300 51370	75 23	10200 46370	110 34	11400 51820	135 41	10200 46370	175 53	11300 51370	230 70	12100 55010	295 90	11000 50010
6 152					20 6	10150 46140	30 9	11300 51370	40 12	16300 74100	50 15	14700 66830	70 21	16400 74550	95 29	14700 66830	120 37	16300 74100	155 47	17400 79100	210 64	15800 71830
7 178					15 5	13700 62280	22 7	15400 70010	30 9	22000 100010	38 12	20000 90920	56 17	22400 101830	75 23	25000 113650	92 28	22200 100920	100 31	23700 107740	140 43	21600 98190
8 200					12 4	18000 81830	17 5	20000 90920	24 7	29000 131830	30 9	26000 118200	45 14	29000 131830	60 18	32000 145470	70 21	28500 129560	80 24	31000 140930	110 34	28000 127290

How to Use: Select the amount of water you want pumped on a daily basis in the highlighted column and/or the total head measurement and match to the closest value.

Comet mills will start turning in breezes lighter than 8 m.p.h (12.8 k.m.p.h). The pump sizes, elevations and capacities in this Table would be greater if they were based on the mills starting in stronger winds, as are generally the tables for other mills. The reason is that the starting torque of the wheel varies roughly as the square of wind speed; thus a 14 m.p.h (22 k.m.p.h) wind should develop four times as much torque as a 7 m.p.h (11 k.m.p.h) breeze.

Also, the higher daily capacities stated in other tables are obviously calculated on stronger winds of longer duration and shorter distances. The wind conditions for the Comet Table are more usual and therefore preferable.

The notes on The Selection Guide should be read before making use of the Comet Pumping Table. The Comet Pumping Table is a Guide only.



*Your first cost is your last cost with a Comet.
Quality is always remembered long after the price is forgotten.*

SELECTION GUIDE

Particulars Required For Design & Installation

INSTRUCTIONS

It is very important that you provide as much information as possible and supply accurate measurements so that the most efficient and least expensive pumping plant can be recommended to suit your requirements.

First choose the diagram that is most similar to your proposed site and pumping conditions. Answer the general data questions with accurate measurements and include pumping details. If you need a Mill Head only then refer to pages overleaf on Comet Mill Heads on Southern Cross Towers/3-Post Towers.

Photocopy this page to record your details and measurements.

Winds—The Winds, especially the light breezes, must have free access to the mill from all directions. The bottom of the wheel must be at least 15ft (14 metres) above all wind obstructions within 150yds (137 metres) of the mill. Comet pumping capacities are based on average medium winds of 12 to 14 m.p.h (19–22 k.m.p.h) blowing for 10 hours daily.

Elevations—The mill should be loaded and balanced so that it will start pumping in light breezes. Its size depends upon the size of the pump and total elevation. The latter includes not only the vertical heights for suction and delivery elevations but also an allowance for probable water flow friction in pipeline. The delivery pipe size should be at least half the pump diameter.

Suction—In a bore or well it is best to submerge the pump. For a creek or dam the pump should be placed close to the water and the suction elevation must not exceed 22ft (7m), or less if the suction pipeline is long.

COMET MILL PLANT DIAGRAMS

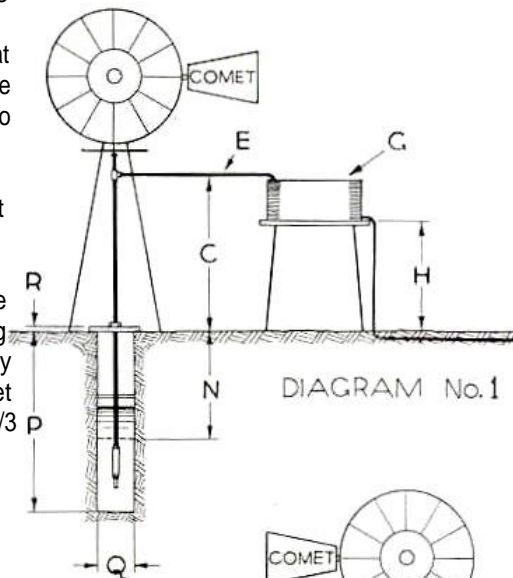


DIAGRAM No.1

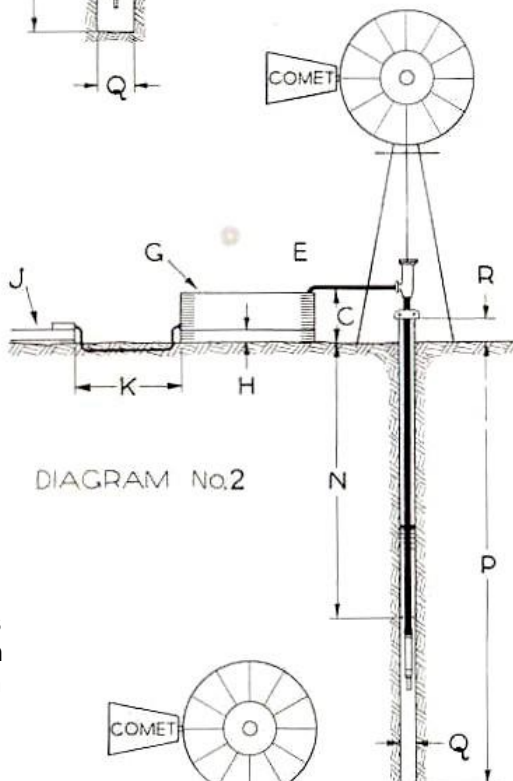


DIAGRAM No.2

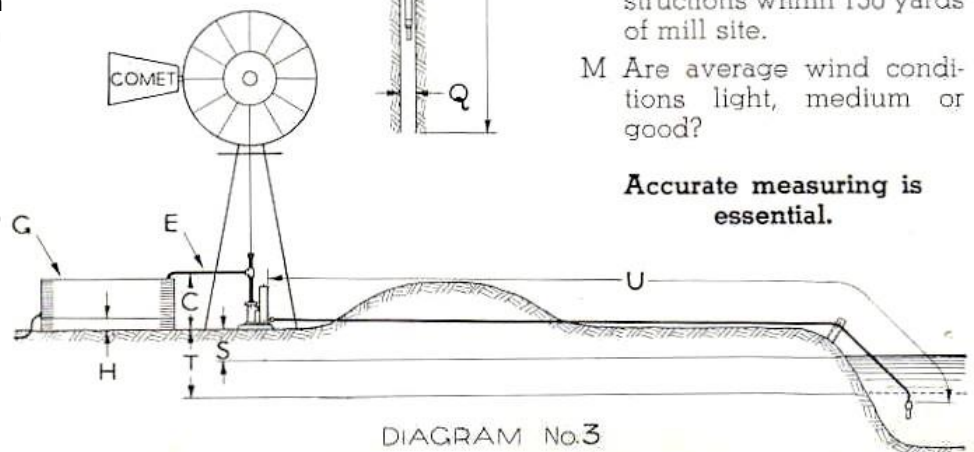


DIAGRAM No.3

General Data

- A State the number of the diagram which is similar to your proposed layout. If your layout is different, please send a sketch showing dimensions below and details of any branch pipelines.
- B Number of gallons required per day.
- C Vertical height from ground level at mill site to point of discharge.
- D Vertical heights from ground level at mill to any rise or depression in delivery pipeline — see Diagram 5.
- E Length of discharge pipe or delivery pipeline.
- F Will pipeline be laid above or below ground level?
- G Capacity and type of storage tank.
- H Height of tankstand.
- J Length, size and type of troughing.
- K Length of pipe from tank to trough.
- L Distance and height of trees and other wind obstructions within 150 yards of mill site.
- M Are average wind conditions light, medium or good?

Accurate measuring is essential.

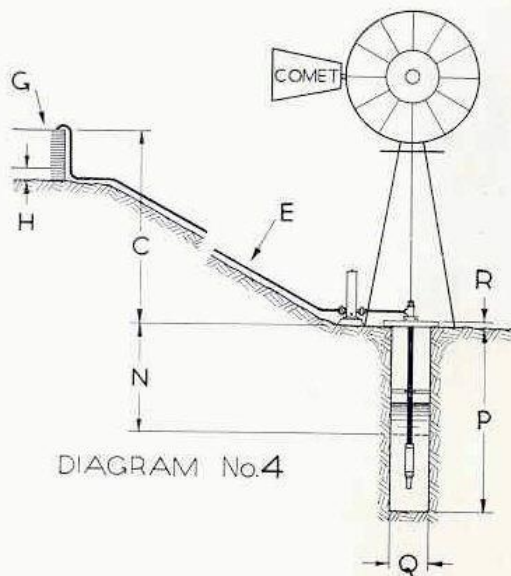
SELECTION GUIDE

Particulars Required For Design & Installation

COMET MILL PLANT DIAGRAMS

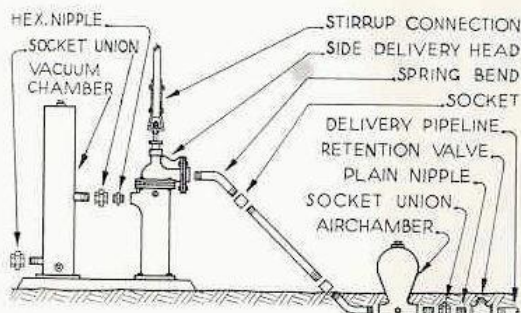
Pumping from Bores or Wells

- N Distance from ground level to lowest water level during pumping test.
- O Gallons pumped per hour during test.
- P Depth from ground level to bottom of bore or well.
- Q Outside diameter of bore casing or size of well.
- R Height of top of casing or well above ground.



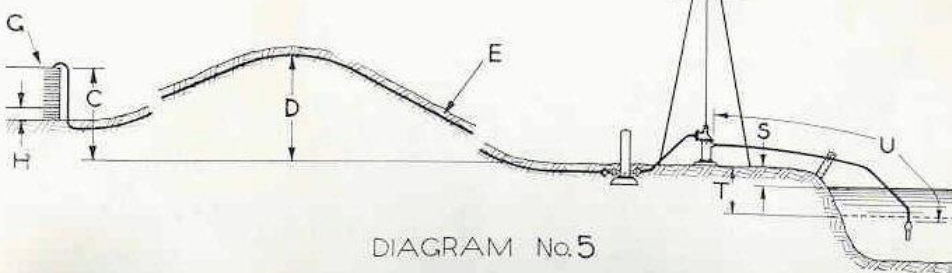
Pumping from Creeks, Earth Tanks, Dams or Shallow Wells

- S Vertical height from normal water level to ground level at mill site.
- T Vertical height from lowest water level to ground level at mill site.
- U Length of suction pipe from footvalve to pump.
- V Vertical height above pump inlet of any unavoidable rise in suction pipeline.



Comet Mills on Other Towers

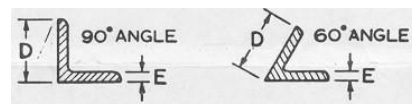
- 1 Size of pump in use.
- 2 Type of pump.
- 3 Size of delivery pipe.
- 4 Condition of pipes.
- 5 and details of tower — see Particulars Folder.



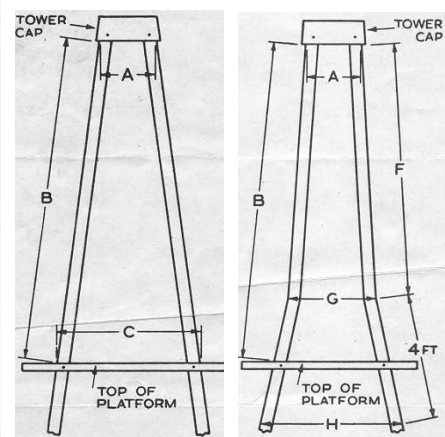
COMET MILL HEADS ON OTHER TOWERS

The COMET Mill is often fitted to other makes of towers, even though it is not then covered by our guarantee. Please measure tower carefully and answer the relevant questions below. It is also important to supply all particulars of the pumping conditions, especially those in reference to sizes of existing pump, pipe etc. See Overleaf for more details.

- Make of existing Mill _____
- Size of existing Mill _____
- Height of existing tower _____
- Number of legs (3 or 4) _____
- Are legs 60° or 90° angle _____
- A Spread of legs at tower cap _____
- B Distance - cap to platform _____
- C Spread of tower at platform _____
- D Width of angle steel leg _____
- E Thickness of flange _____
- F Distance from cap to bend _____
- G Spread of tower at bend _____
- H Spread 4ft below bend _____



State type No. of your tower _____



Type No. 1

Type No. 2

WINDMILL CODES

C Pattern Windmills

MAA	8ft	C Pattern
MBB	10ft	
MAB	8-10ft*	

MCC	12ft	C Pattern
MDD	14ft	
MCD	12-14ft*	

D Pattern Windmills

MQQ	16ft	D Pattern
MRR	18ft	
MQR	16-18ft*	

MSS	20ft	D Pattern
MTT	22ft	
MST	20-22ft*	

MUU	24ft	D Pattern
MVV	27ft	
MWW	30ft	
MUW	24-30ft*	
MVW	27-30ft*	

* Parts with these codes means that the parts are interchangeable with that size range. All other parts are specific for that size.

WINDMILL SYSTEMS

DIRECT ACTING WINDMILLS AND TOWERS

‘C’PATTERN8-14FT WHEEL DIAMETER

6-14FT WINDMILLS on a 4-POST TOWER

CODE	SIZE	TOWER SIZE			
		20ft	30ft	40ft	50ft
COM1001SS	8ft	\$ 10,200	\$ 10,850	\$ 11,700	
COM1002SS	10ft	\$ 10,850	\$ 11,800	\$ 12,300	
COM1003SS	12ft	\$ 13,850	\$ 14,500	\$ 16,300	\$ 17,400
COM1004SS	14ft		\$ 15,200	\$ 16,500	\$ 18,100

8-14FT WINDMILL HEADS

TO SUIT 4-POST TOWERS

COM1001	MA 2.4m (8ft) Windmill Head for 4-Post Tower	\$ 8,900
COM1002	MB 3.0m (10ft) Windmill Head for 4-Post Tower	\$ 9,500
COM1003	MC 3.6m (12ft) Windmill Head for 4-Post Tower	\$ 11,600
COM1004	MD 4.2m (14ft) Windmill Head for 4-Post Tower	\$ 13,900

All Windmills include Standard Safety Package (timber platform & ladder upgrade)

‘D’PATTERN16-22FTWHEELDIAMETER

16-22FT WINDMILLS on a 4-POST TOWER (24,27,30 POA)

CODE	SIZE	TOWER SIZE			
		30ft	40ft	50ft	60ft
COM1037SS	16ft	\$ 62,400	\$ 68,400	\$ 72,400	
COM1038SS	18ft	\$ 64,900	\$ 69,900	\$ 74,600	
COM1039SS	20ft		\$ 85,500	\$ 89,400	
COM1040SS	22ft		\$ 89,600	\$ 91,500	

16-22FT WINDMILL HEADS

TO SUIT 4-POST TOWERS

COM1037	MQ 4.9m (16ft) Windmill Head for 4-Post Tower	\$ 58,800
COM1038	MR 5.5m (18ft) Windmill Head for 4-Post Tower	\$ 62,850
COM1039	MS 6.0 (20ft) Windmill Head for 4-Post Tower	\$ 82,900
COM1040	MT 6.7 (22ft) Windmill Head for 4-Post Tower	\$ 86,000

Sizes 24ft, 27ft and 30ft are also available—POA for more power and water

SAFETY UPGRADES FOR TOWERS (4-POST)

To Suit Existing Towers (Galvanised steel platform with non-slip grate floor, perimeter toe plate, & ladder)

Safety Platform and Ladder Upgrade (price may vary depending on tower height and mill size)	\$ 2450
---------------------------------------------------------------------------------------------	---------

Prices quoted are exclusive of GST and Freight



WINDMILL PUMPS FLUSH END CYLINDER PUMP

with pinned Plunger Rod for extra strength and stability

SIZES: 1¾" - 6"

FLUSH END PUMPS BRASS BARREL



CODE	SIZE	SUCTION	DISCHARGE	STROKE	ROD	PRICE
COM1077	1¾	25mm	40mm	12	½"	\$ 760
COM1078	2	32mm	40mm	12	½"	\$ 780
COM1080	2½	32mm	40mm	12	5/8"	\$ 850
COM1082	3	40mm	50mm	12	5/8"	\$ 950
COM1084	3½	50mm	50mm	12	¾"	\$ 995
COM1085	4	50mm	65mm	12	¾"	\$ 1,380
COM1086	4½	65mm	80mm	12	¾"	\$ 1,490
COM1087	5 NA	65mm	80mm	12	¾"	\$
COM1088	6	65mm	80mm	12	1"	\$ 2,190

The feature of Flush End Pumps are that the end caps are fitted flush with the outside of the barrel, enabling the maximum size of pump to be used in a given size of bore. Pumping from wells or shallow bores is the ideal application for the range of high quality, economical Comet Flush End Pumps. Comet Pumps are quality hand-made pumps for longer service. Pump construction of gun-metal and bronze and leather buckets ensures constant efficiency and satisfactory pumping in hard waters at total elevations of up to 200 feet.



HEAVY DUTY DRAW PLUNGER PUMPS

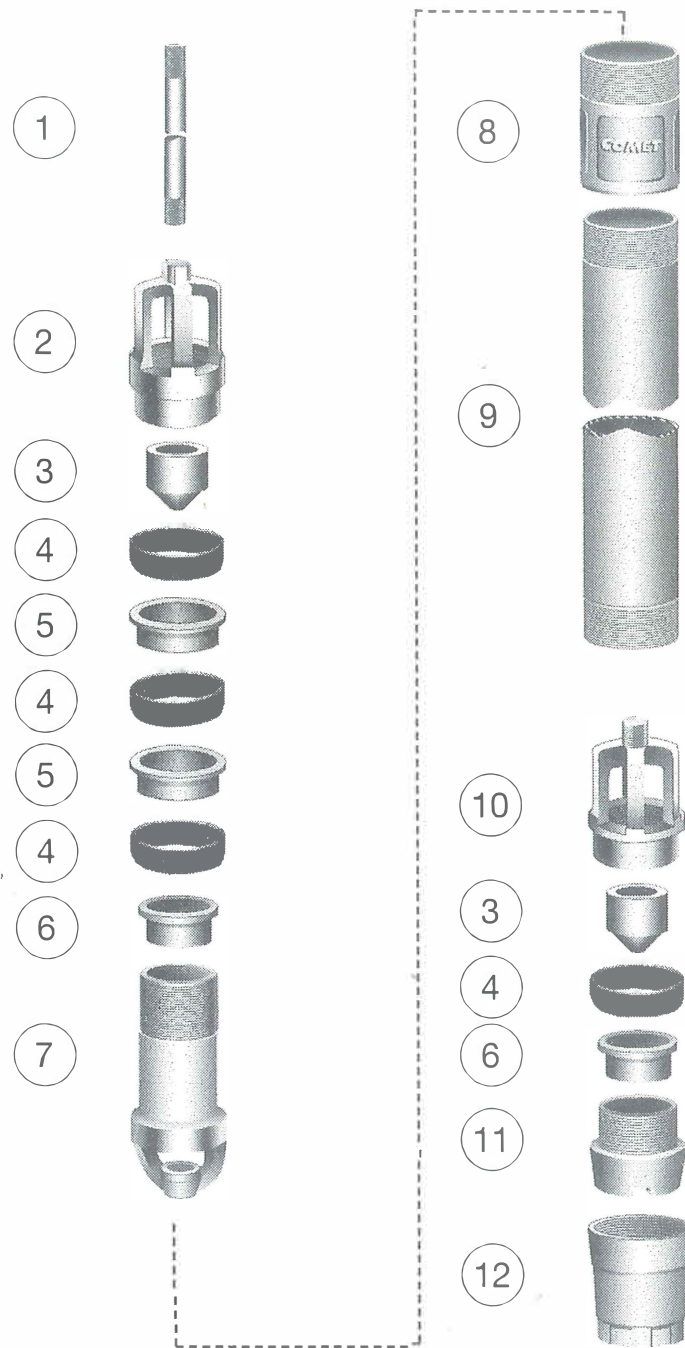
SIZES: 2" - 4¼"

STAINLESS STEEL SLEEVE VALVE DRAW PLUNGER PUMPS BRASS BARREL

CODE	SIZE inches	SUCTION	DISCHARGE	STROKE	ROD	PRICE
COM1109	2¼	32mm	65mm	24	¾"	\$ 1,790
COM1110	2 1/2					
COM1111	2¾	40mm	80mm	24	¾"	\$ 1,990
COM1113	3¼	50mm	100mm	24	7/8"	\$ 2,280
COM1116	4¼	65mm	125mm	24	1"	\$ 2,890

Prices quoted are exclusive of GST and Freight.

Sleeve
Valve
Pictured


PARTS CODE
ITEM NO. DESCRIPTION QTY

1	Plunger rod 24" Stroke	1
2	Plunger Cage	1
3	Stainless Steel Valve	2
4	Leather Bucket	4
5	Plunger Ring for Leather Bucket	2
6	Stainless Steel Valve Seat	2
7	Plunger Body	1
8	Top End Casting	1
9	Barrel 24" Stroke	1
10	Bottom Valve Cage	1
11	Bottom Valve Seat	1
12	Bottom End Casting	1

WINDMILL PUMPS

SYPHON PUMP — vertical discharge

SIZES: 2" - 6"

VERTICAL DISCHARGE SYPHON PUMPS BRASS BARREL

CODE	SIZE	SUCTION	DISCHARGE	STROKE	ROD	PRICE
COM1117	2	32mm	50mm	12	5/8"	\$ 1680
COM1119	2½	32mm	50mm	12	5/8"	\$ 1690
COM1121	3	40mm	50mm	12	5/8"	\$ 1,740
COM1123	3½	50mm	80mm	12	3/4"	\$ 1,980
COM1124	4	50mm	80mm	12	3/4"	\$ 2,390
COM1125	4½	50mm	80mm	12	7/8"	\$ 2,780
COM1126	5 SS	80mm	80mm	12	7/8"	\$ NA
COM1127	6	80mm	80mm	12	7/8"	\$ 2,970



SYPHON PUMP — side discharge

SIZES: 2" - 6"

SIDE DISCHARGE SYPHON PUMPS BRASS BARREL

CODE	SIZE	SUCTION	DISCHARGE	STROKE	ROD	Packing Tube	Ex GST
COM1128	2	32mm	40mm	12	5/8"	32mm	\$ 1 6 9 0
COM1130	2½	32mm	40mm	12	5/8"	32mm	\$ 1,790
COM1132	3	40mm	40mm	12	5/8"	32mm	\$ 1,895
COM1134	3½	50mm	50mm	12	3/4"	40mm	\$ 1,990
COM1135	4	50mm	50mm	12	3/4"	40mm	\$ 2,350
COM1136	4½	65mm	65mm	12	7/8"	40mm	\$ 2,710
COM1137	5 SS	65mm	65mm	12	7/8"	45mm	\$ NA
COM1138	6	80mm	80mm	12	7/8"	45mm	\$ 3,400



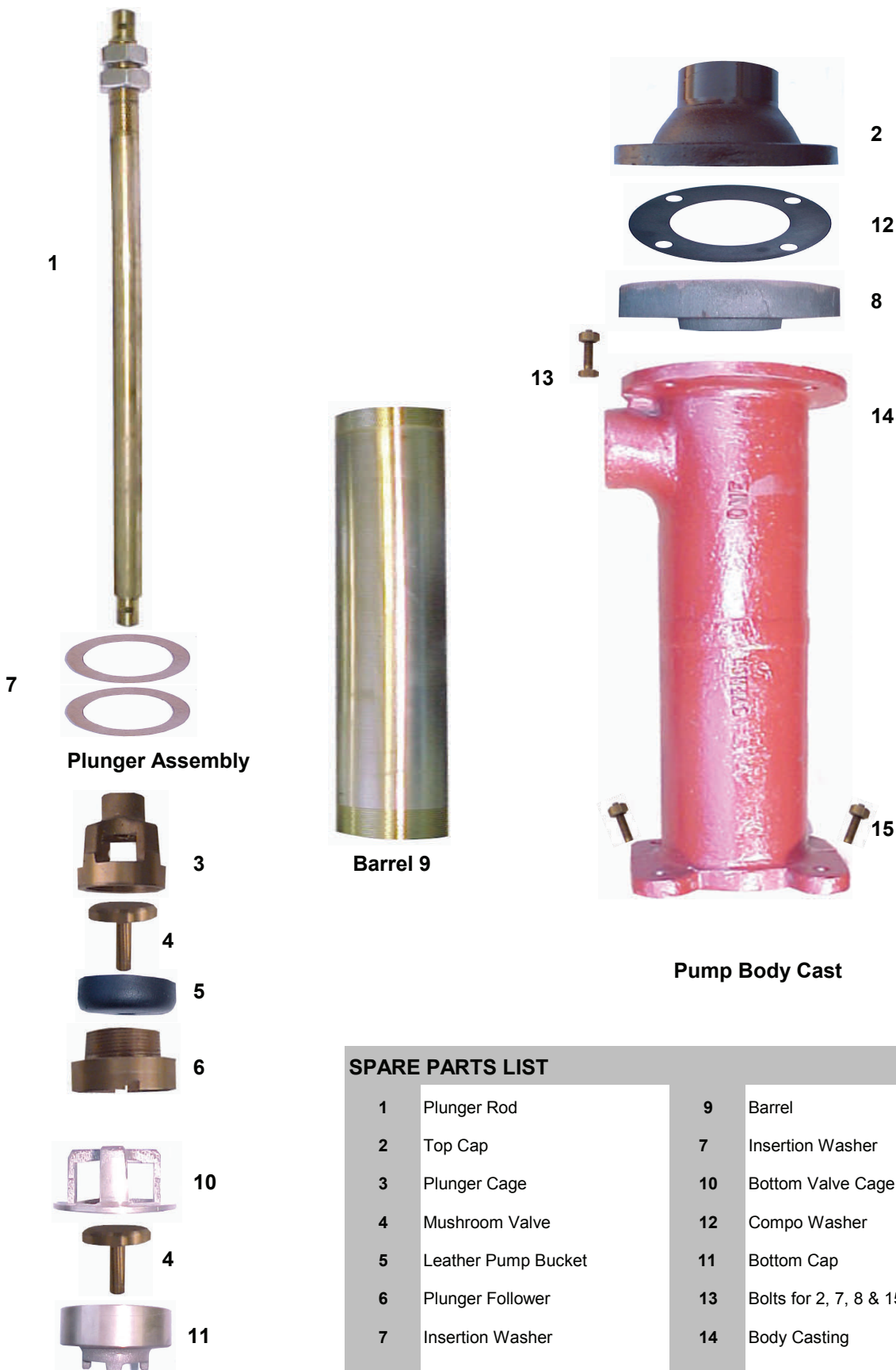
Prices quoted are exclusive of GST and Freight.

OVERHEAD SYPHON PUMPS

PARTS LIST

SIZES (INCHES): 2, 2¼, 2½, 2¾, 3, 3¼, 3½, 4, 5

When ordering parts state the **Size** and **Working Stroke** of Pump, Name and Number of Part and Type of Pump Rod Connection. Include Composition and Insertion Washers in Screw Cap Pumps.



SPARE PARTS LIST

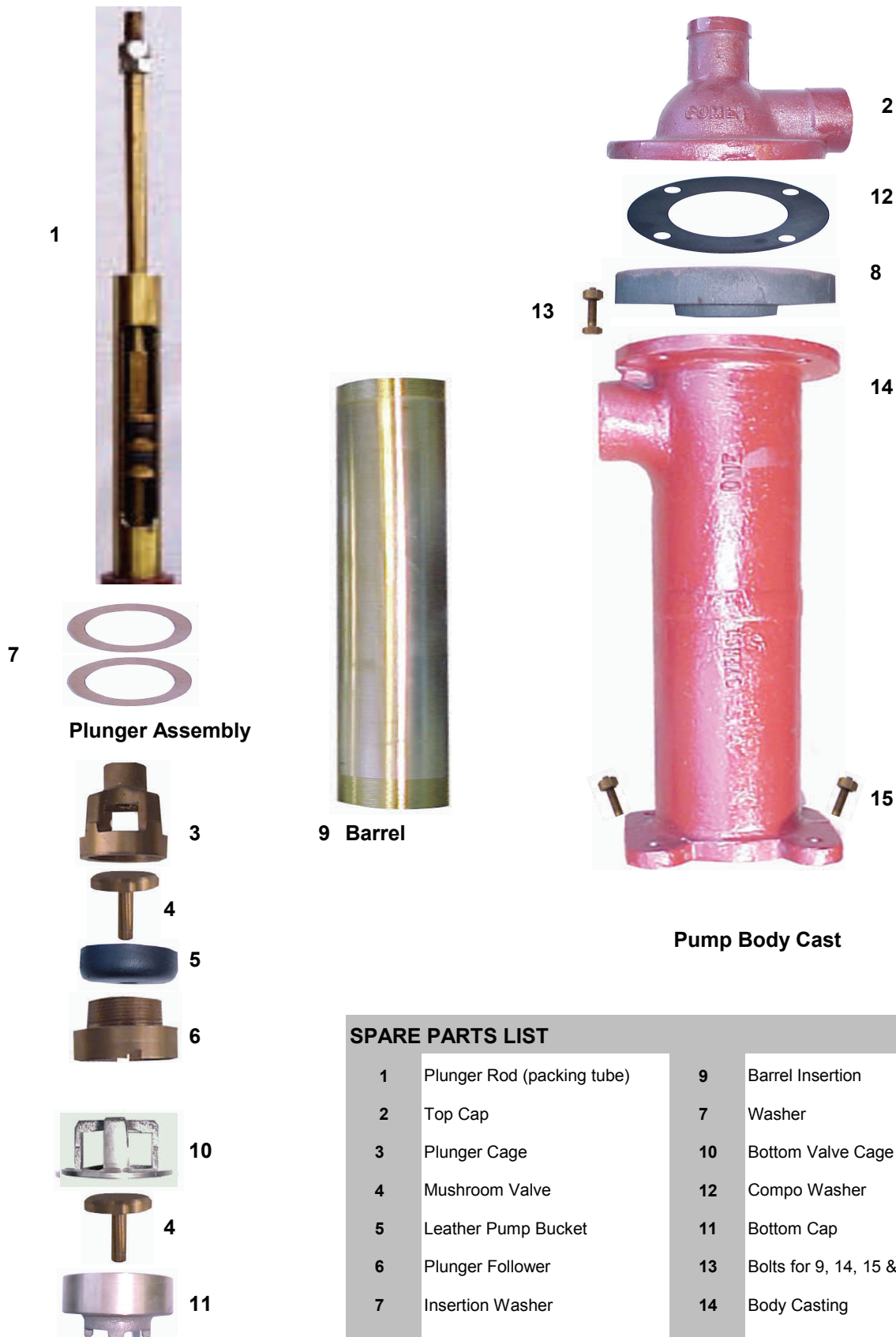
1	Plunger Rod	9	Barrel
2	Top Cap	7	Insertion Washer
3	Plunger Cage	10	Bottom Valve Cage
4	Mushroom Valve	12	Compo Washer
5	Leather Pump Bucket	11	Bottom Cap
6	Plunger Follower	13	Bolts for 2, 7, 8 & 15
7	Insertion Washer	14	Body Casting
8	Intermediate Flange	15	Bolts for Foundation Washers

SIDE DISCHARGE SYPHON PUMP

PARTS LIST

SIZES (INCHES): 2, 2¼, 2½, 2¾, 3, 3¼, 3½, 4, 4½, 5, 6 (Larger available custom order)

*When ordering parts state the **Size** and **Working Stroke** of Pump, Name and Number of Part and Type of Pump Rod Connection. Include Composition and Insertion Washers in Screw Cap Pumps.*



SPARE PARTS LIST

1	Plunger Rod (packing tube)	9	Barrel Insertion
2	Top Cap	7	Washer
3	Plunger Cage	10	Bottom Valve Cage
4	Mushroom Valve	12	Compo Washer
5	Leather Pump Bucket	11	Bottom Cap
6	Plunger Follower	13	Bolts for 9, 14, 15 & 22
7	Insertion Washer	14	Body Casting
8	Intermediate Flange	15	Bolts for Foundation Washers

WINDMILL PUMPS

VERTICAL & SIDE



PLUNGER ASSEMBLY		STROKE		
CODE	SIZE	8"	10"	12"
COM111728PA	2	POA	POA	\$ 490.00
COM111829PA	2¼	POA	POA	\$ 540.00
COM111930PA	2½	POA	POA	\$ 550.00
COM112031PA	2¾	POA	POA	\$ 660.00
COM112132PA	3	POA	POA	\$ 690.00
COM112233PA	3¼	POA	POA	\$ 780.00
COM112334PA	3½	POA	POA	\$ 790.00
COM112435PA	4	POA	POA	\$ 850.00
COM112536PA	4½	POA	POA	\$ 890.00
COM112637PA	5	POA	POA	\$ 995.00
COM112738PA	6	POA	POA	\$ 1,050.00

EXTRA STRONG!



INTERMEDIATE FLANGE, BARREL & BOTTOM CAP ASSEMBLY		STROKE		
		8"	10"	12"
COM111728FBA	2	POA	POA	\$ 690.00
COM111829FBA	2¼	POA	POA	\$ 720.00
COM111930FBA	2½	POA	POA	\$ 740.00
COM112031FBA	2¾	POA	POA	\$ 790.00
COM112132FBA	3	POA	POA	\$ 810.00
COM112233FBA	3¼	POA	POA	\$ 850.00
COM112334FBA	3½	POA	POA	\$ 990.00
COM112435FBA	4	POA	POA	\$ 1090.00
COM112536FBA	4½	POA	POA	\$ 1260.00
COM112637FBA	5	POA	POA	\$ NA
COM112738FBA	6	POA	POA	\$ 1795.00

Prices quoted are exclusive of GST and Freight.

Adjustable Pressure Relief Valves (Bronze body, brass bonnet, stainless spring)

32mm (1 ¼") Bronze Adjustable 200kpa to 1000kpa - \$588.44 + gst

40mm (1 ½") Bronze Adjustable 200kpa to 1000kpa - \$717.90 + gst



PUMP PARTS

PACKING TUBES



Packing Tube

Why COMET Windmills Are More Suitable For The Use of Packing Tubes

Comets' direct acting windmills have a distinct advantage over geared windmills by means of unique adjustable weights on the wheel arms to counter-balance the upthrust of the working parts and rods. This is not possible for geared mills as they require 4-7 turns for each pump stroke. This is the reason why Comet Windmills are suited to the packing tube principle and are known as 'Australia's Leading Mill'.

Sizes: 1¼" - 2"

PACKING TUBES					PRICE ex GST
CODE	SIZE inches	ROD inches	STROKE mm/in.	Minimum Pipe Size mm/in.	
COM1139	1¼	5/8	300 - 12	40 - 1½"	\$ 495.00
COM1140	1¼	5/8	400 - 16	40 - 1½"	\$ 495.00
COM1141	1½	¾	300 - 12	50 - 2"	\$ 595.00
COM1142	1½	¾	400 - 16	50 - 2"	\$ 595.00
COM1143	1¾	7/8	300 - 12	65 - 2½"	\$ 685.00
COM1144	1¾	7/8	400 - 16	65 - 2½"	\$ 690.00
COM1145	2	1	300 - 12	80 - 3"	\$ 720.00
COM1146	2	1	400 - 16	80 - 3"	\$ 760.00

TO SUIT SX SYPHON PUMPS

PACKING TUBE ADAPTORS			PRICE ex GST
CODE	Packing Tube ID	Column Pipe	
COM1147	1¼	1½	\$ 495.00
COM1148	1½	2	\$ 595.00
COM1149	1¾	2½	\$ 690.00



Plunger: Quality made plunger assembly, double pinned coupling with two inverted cup leathers providing a reliable water seal.

Prices quoted are exclusive of GST and Freight.

Prices quoted are exclusive of GST and Freight



COMET®
WINDMILL PRODUCTS

LEATHER PUMP BUCKETS

CODE	SIZE MM	SIZE INCH	PRICE \$
COM1165	32	1 ¼"	9.00
COM1166	40	1 ½"	12.00
COM1167	45	1 ¾"	13.00
COM1168	50	2	14.00
COM1169	57	2 ¼"	15.50
COM1170	65	2 ½"	16.00
COM1171	70	2 ¾"	17.00
COM1172	80	3	17.50
COM1173	82	3 ¼"	18.00
COM1174	90	3 ½"	19.00
COM1175	95	3 ¾"	20.00
COM1176	100	4	22.00
COM1177	106	4 ¼"	23.00
COM1178	115	4 ½"	26.00
COM1179	125	5	31.00
COM1178	130	5 ¼"	44.00
COM1181	150	6	52.00



NEOPRENE PUMP BUCKETS NOT AVAILABLE

CODE	SIZE MM	SIZE INCH	PRICE \$
COM1185	32	1 ¼"	14.00
COM1186	40	1 ½"	14.50
COM1187	45	1 ¾"	15.00
COM1188	50	2	16.00
COM1189	57	2 ¼"	16.50
COM1190	65	2 ½"	17.00
COM1191	70	2 ¾"	17.50
COM1192	80	3	18.00
COM1193	82	3 ¼"	18.50
COM1194	90	3 ½"	19.00
COM1195	95	3 ¾"	19.50
COM1196	100	4	20.00
COM1197	106	4 ¼"	21.00
COM1198	115	4 ½"	21.50
COM1199	125	5	32.00
COM1200	130	5 ¼"	55.00
COM1201	150	6	66.00

Prices quoted are exclusive of GST and freight

TANK STANDS

TYPE 'S' TANKSTAND

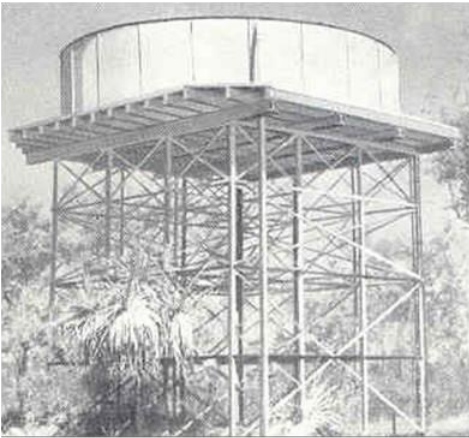
(splayed legs)

The COMET Steel Tankstand is the ideal structure for supporting a water storage tank which needs to be elevated for a pressure supply. When properly erected on correct foundations COMET Tankstands withstand wind gales with safety. Designed so that accuracy and ease of assembly are assured, most holes have only 1/32 inch clearance for the bolts. Heavy steel footplates are welded to angle steel leg sections. The diagonal braces are flat steel bars, crossed in pairs so that they safely transfer the tensile loads imposed by winds from any direction. The bearers, joists and decking for COMET Tankstands are specially selected timber of the strongest and most durable species. Sizes are to individual requirements.

TYPE 'P' TANK

(parallel legs)

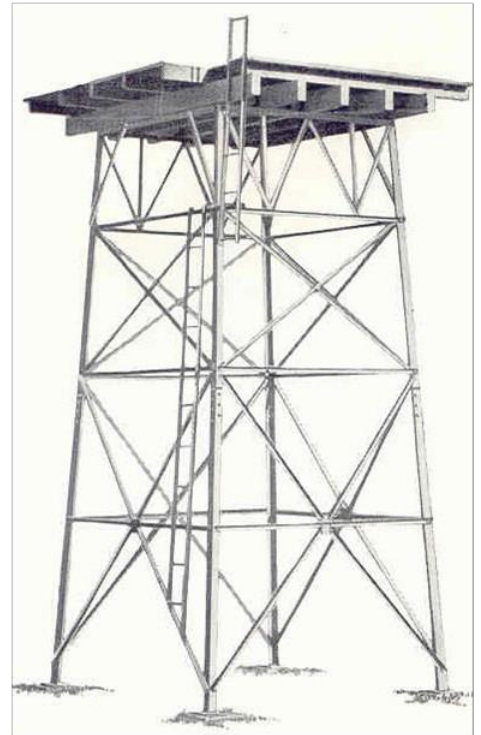
GALVANISED STEEL or HARDWOOD DECK



SIZES

5ft, 10ft, 20ft, 30ft heights
to suit any specified tank volume

Comet Type 'P' Tankstand



Comet Type 'S' Tankstand

FULLWAY FLOATVALVES

TYPE "H" FULLWAY LOW PRESSURE STAINLESS FLOAT WITH BRONZE BODY			
COM1420	1	Type H Low Pressure Floatvalve	\$1250.00
COM1421	1 ¼	Type H Low Pressure Floatvalve	\$1550.00
COM1422	1 ½	Type H Low Pressure Floatvalve	\$1675.00
COM1423	2	Type H Low Pressure Floatvalve	\$1740.00
COM1424	2 ½	Type H Low Pressure Floatvalve	\$1875.00
COM1425	3	Type H Low Pressure Floatvalve	\$2110.00
COM1426	4	Type H Low Pressure Floatvalve	\$2445.00

TYPE "E" HIGH PRESSURE STAINLESS FLOAT BRONZE BODY			
COM1427	1 ¼	Type E High Pressure Floatvalve	\$2180.00
COM1428	1 ½	Type E High Pressure Floatvalve	\$2450.00
COM1429	2	Type E High Pressure Floatvalve	\$2790.00



A floatvalve regulates the water supplied to stock from the storage tanks. For this important function it must permit at times an inrush of water to the trough for mobs of thirsty sheep or cattle, and yet remain closed without leakage for long periods.

Prices quoted are exclusive of GST and Freight

WINDMILL PARTS

WHEEL ASSEMBLY

C PATTERN

WHEEL ASSEMBLY 8, 10, 12, 14ft

CODE	QUANTITY	PRICE
COM1001W	8ft Wheel Assembly Less Hub, Bolts & Balance Weights	\$ 1,990
COM1001WH	8ft Wheel Assembly Complete, with Hub, Bolts & Balance Weights	\$ 2,390
COM1002W	10ft Wheel Assembly Less Hub, Bolts & Balance Weights	\$ 2,250
COM1002WH	10ft Wheel Assembly Complete, with Hub, Bolts & Balance Weights	\$ 2,990
COM1003W	12ft Wheel Assembly Less Hub, Bolts & Balance Weights	\$ 3,790
COM1003WH	12ft Wheel Assembly Complete, with Hub, Bolts & Balance Weights	\$ 4,290
COM1004W	14ft Wheel Assembly Less Hub, Bolts & Balance Weights	\$ 3,990
COM1004WH	14ft Wheel Assembly Complete, with Hub, Bolts & Balance Weights	\$ 4,580



D PATTERN

WHEEL ASSEMBLY 16, 18, 20, 22ft

CODE	QUANTITY	PRICE
COM1037W	16ft Wheel Assembly Less Hub, Bolts & Balance Weights	\$ POA
COM1037WH	16ft Wheel Assembly Complete, with Hub, Bolts & Balance Weights	\$ POA
COM1038W	18ft Wheel Assembly Less Hub, Bolts & Balance Weights	\$ POA
COM1038WH	18ft Wheel Assembly Complete, with Hub, Bolts & Balance Weights	\$ POA
COM1039W	20ft Wheel Assembly Less Hub, Bolts & Balance Weights	\$ POA
COM1039WH	20ft Wheel Assembly Complete, with Hub, Bolts & Balance Weights	\$ POA
COM1040W	22ft Wheel Assembly Less Hub, Bolts & Balance Weights	\$ POA
COM1040WH	22ft Wheel Assembly Complete, with Hub, Bolts & Balance Weights	\$ POA

Prices quoted are exclusive of GST and Freight

WINDMILL TYPE	Mill Size Wheel Diam.		No. Sails	No. Arms	No. Inner Rims	No. Middle Rims	No. Outer Rims	No. Brackets	Bracket No.
	Foot	metre							
'C' PATTERN MILL	6	1.83	12	4	2	-	4	12	0 0
	8	2.44	12	4	2	-	4	12	1 2
	10	3.05	18	6	3	-	6	18	1 2
	12	3.66	18	6	3	-	6	18	3 4
	14	4.27	24	8	4	-	8	24	3 4
'D' PATTERN MILL	16	4.88	24	8	8	-	8	24	3 4
	18	5.49	24	8	8	-	8	24	3 5
	20	6.10	24	8	8	8	8	24	3 4 5
	22	6.71	30	10	10	10	10	30	3 4 5
	24	7.32	30	10	10	10	10	30	6 7 8
	27	8.23	36	12	10	10	10	36	6 7 8
	30	9.14	42	14	14	14	14	42	6 7 8

Prices quoted are exclusive of GST and Freight

WINDMILL OVERHAUL PACKAGES

'C' PATTERN MILLS

SIZES: 8, 10, 12, 14 foot

SUPERIOR 'C' PATTERN FEATURES

Drive Shaft



Oilwell

Bearing Bush

Connecting Rod

Crosshead Pin

Crosshead

Swivel

Guide Rollers

Draw Bar

Mill Rod

The Comet 'C' Pattern Mills have earned a wide reputation for great pumping capacity and longer trouble-free service. Extreme sensitivity to changes in wind direction, together with effective governing for safety in storms, means simply that the Comet will out perform any other mill of similar size. Made in five (5) sizes the 6 to 14ft Comet Mills are direct acting for better efficiency and great strength. The fewer working parts mean less friction loss than geared mills. The Comet makes more use of the small power available in the prevalent light winds.

The exceptionally strong main casting with integral mastpipe is accurately machined to close tolerances. The unique Comet Hardwood Bearing Bushes make by far the best bearings for the slow speed, heavy duty work of a windmill and a great many of them have been in service for over 30 years.

The cast iron crank with steel pin is shrunk and keyed to the bright steel driving shaft and cannot work loose. Thrust is taken between machined faces of the main casting and wheel hub.

GENUINE OVERHAUL PACKAGES

C PATTERN MAJOR OVERHAUL KIT

6FT

PRICE

\$

8-10FT

MAA1000

8FT Major Overhaul Packages

\$

1,790

MBB1000

10FT Major Overhaul Packages

\$

1,790

12-14FT

MCC1000

12FT Major Overhaul Packages

\$

2,250

MDD1000

14FT Major Overhaul Packages

\$

2,250

MAB1000

8-10FT Minor Overhaul Packages

\$

1290

MCD1000

12-14FT Minor Overhaul Packages

\$

1,890

Repair Kits 8-14ft

NEW

MAB1034

8-10 Upper/lower Turntables complete

\$

790

MCD1034

12-14 Upper/lower Turntables complete

\$

999

MAB1035

8-10 Inner/Outer Pullout Collars complete

\$

650

MCD1035

12-14 Inner/Outer Pullout Collars complete

\$

850

MAB1036

8-10 Roller Guide complete

\$

495

MCD1036

12-14 Roller Guide complete

\$

595

12 MONTH WARRANTY

MAJOR Overhaul Package Components

1 x Connecting Rod c/w Oil Lid and Connecting Rod Bush

1 x Crosshead Complete with Crosshead Pin & through pin

1 x Swivel c/w Bolts for Swivel to Guide Bar

1 x Driving Shaft c/w Crank Pin Washer & Set Screws & through pin for Drive Shaft

2 x Driving Shaft Bush (set)

MINOR Overhaul Package Components

ALWAYS USE GENUINE PARTS FOR LONGER LIFE AND GUARANTEED SAFETY

© Copyright Comet Windmills Australia Pty Ltd 2019

Phone: 02 6568 3711 www.cometwindmills.com.au Fax: 02 6568 3722

LIST OF PARTS 8, 10, 12, 14ft C PATTERN MILLS

- | | |
|----------------------------------------------------------------------------------------------------------------------------------------------------------------|-----------------------------------------------------------|
| 1 Main Casting Complete Incl. 2, 50, 95, 137, 139, 140, 191 | 90 Sail – One only |
| 2 Oil Lid for Main Casting | 91 Outer Sail Brackets – Complete Set |
| 3 Hub Complete Incl. 125 | 92 Outer Sail Bracket – One only |
| 5 Crank Pin Washer | 93 Inner Sail Brackets – Complete Set |
| 6 Connecting Rod Complete Incl. 7, 78, 157, 192 | 94 Inner Sail Bracket – One only |
| 7 Oil Lid for Connecting Rod | 95 Galvanised Oil Box for Main Casting |
| 8 Crosshead | 101 Ring Oiler Tube |
| 9 Swivel Incl. 120 | 105 Galv. Bolts – Sail Brackets to Rims |
| 10 Bottom Guide Complete Incl. 10A | 106 Galv. Bolts – Sail Brackets to Sails |
| 10A Grease Cup for Bottom Guide | 107 Bolts – Lap of Outer Rims |
| 11 Roller Guide Complete Incl. 12, 128 | 108 Bolts – Inner Rims to Arms at Lap |
| 12 Rollers for Roller Guide | 109 Bolts – Outer Rims to Arms |
| 13 Inner Pullout Collar | 110 Bolts – Arms to Hub |
| 14 Outer Pullout Collar Complete Incl. 116 | 111 Bolts – Inner Rims to Arms |
| 15 Top of Turntable Complete Incl. 15A | 112 Bolts – Vane Sheet to Vane Angles |
| 15A Oil Lid for Turntable | 113 Bolt – Upright Vane Angle |
| 16 Tower Cap | 114 Bolt – Outer End of Vane Angles |
| 17 Top Vane Hinge Casting | 115 Bolts – Bottom Guide to Tower |
| 18 Bottom Vane Hinge Casting Complete Incl. 19, 85 | 116 Bolts – Outer Pullout Collar |
| 19 Buffer Studs | 117 Bolts – Tower Cap to Tower |
| 20 Pullout Bracket Complete Incl. 21, 122 | 119 Bolts – Pullout Bracket to Main Casting |
| 21 Chain Rollers | 120 Bolts – Swivel to Guide Bar |
| 22 Tension Casting | 121 Bolts – Top Vane Hinge Casting to Angle |
| 23 Balance Weights Complete Incl. 126 | 122 Bolt – Chain Roller on Pullout Bracket |
| 32 Wheel Arms – Complete Set | 124 Stay Bolt for Pullout Bracket |
| 33 Wheel Arm – One only | 125 Clamp Bolts for Hub |
| 39 Outer Rims – Complete Set | 126 Bolts – Balance Weights |
| 40 Outer Rim – One only | 127 Bolts – Connecting Straps to Mill Rod |
| 41 Inner Rims – Complete Set | 128 Bolts – Rollers on Rollerguide |
| 42 Inner Rim – One only | 129 Bolt – Chain Roller on Main Casting |
| 43 Fishplates for joining Mill Rods | 137 Set Screws for 50 |
| 44 Connecting Straps for Guide Bar | 138 Set Screws for 5 |
| 49 Pullout Lever Complete Incl. 59 | 139 Set Screw with Leather Washer – for Oil Well |
| 50 Stop Bracket on Mast Pipe | Draining Hole and Oil Level Hole |
| 52 Equalizing Bar | 140 Set Screw for Drive Shaft Bearing Bushes |
| 55 Chain Plate | 142 Set Screw for 86 |
| 57 'S' Hooks for Pullout Chain | 157 Through Pin for Crosshead Pin |
| 59 Stop Pin for Pullout Lever | 159 Through Pin for Drive Shaft |
| 60 'U' Clip for Vane Hinge Rod with Nuts and Washers | 182 Steel Balls for Turntable |
| 61 Tension Bolt with Nuts | 183 Double Pullout Chain Complete Incl. 52 |
| 62 'U' Clip for Pullout Lever with Nuts and Washers | 185 Pullout Chain for Vane Complete Incl. 57 |
| 63 Vane Hinge Rod Incl. 197 | 186 Check Chain |
| 66 Pullout Guide Rod with Nut and Lock Washer | 187 Galv. Pullout Wire |
| 69 Vane Frame – Complete Incl. 17, 18, 70, 71, 72, 73 | 190 Mill Rods |
| 70 Top Vane Angle | 191 Drive Shaft Bearing Bushes (set) |
| 71 Stiffening Vane Angle | 192 Connecting Rod Bearing Bushes |
| 72 Upright Vane Angle | 196 Syphon Wicks for Oil Wells |
| 73 Bottom Vane Angle | 197 Oil Cup for 63 |
| 78 Crosshead Pin Complete Incl. 157 | 200 Dust Cover Complete Incl. 201, 202, 203. |
| 80 Driving Shaft Complete with Crank, Crank Pin, 5, 138, 159 | 201 Oil Box in Dust Cover |
| 84 Governor Spring | 202 Fastening Bolt for Dust Cover |
| 85 Buffer Spring | 203 Wing Nut for 202 |
| 86 Latch Spring Complete with Latch | 189 Pullout Winch Complete (Not Available). This was |
| 88 Vane Sheet Complete with Galv. Straps | between 1938-1942. If a replacement or any parts are |
| 89 Sails – Complete Set | required Part 49 Pullout Lever Complete will be supplied. |
| Note:- The following parts were used prior to 1940 and are not inter-changeable with Double Chain Pullout Parts of similar description used since 1940. | |
| 10 Pipe Pullout Bottom Guide Complete Incl. 10A. | 14 Pipe Pullout Outer Collar Complete Incl. 116 |
| 11 Pipe Pullout Roller Guide Complete Incl. 12, 128. | 100 Pullout Pipe with Split Pin |

WINDMILL PARTS

OVERHAUL KITS — D PATTERN

MAJOR Overhaul Kit 16-30ft — Driveshaft, Connecting Rod, Crosshead (incl. pin/dowel), Swivel, choice of wood or nylon bearings.

CODE		PRICE
MQQ1000	Major Overhaul Packages 16ft	\$ 4,900
MRR1000	Major Overhaul Packages 18ft	\$ 5,100
MSS1000	Major Overhaul Packages 20ft	\$ 6,200
MTT1000	Major Overhaul Packages 22ft	\$ 7,200
MUU1000	Major Overhaul Packages 24ft	\$ 8,700
MVV1000	Major Overhaul Packages 27ft	\$ 10,900
MWW1000	Major Overhaul Packages 30ft	\$ 11,100

MINOR Overhaul Kit 16 - 30ft — Connecting Rod, Crosshead (incl. pin/dowel), Swivel, choice of wood or nylon bearings.

CODE		PRICE
MQR1000	Minor Overhaul Packages 16-18ft	\$ 3,290
MST1000	Minor Overhaul Packages 20—22ft	\$ 4,290
MUW1000	Minor Overhaul Packages 24, 27, 30ft	\$ 7,750

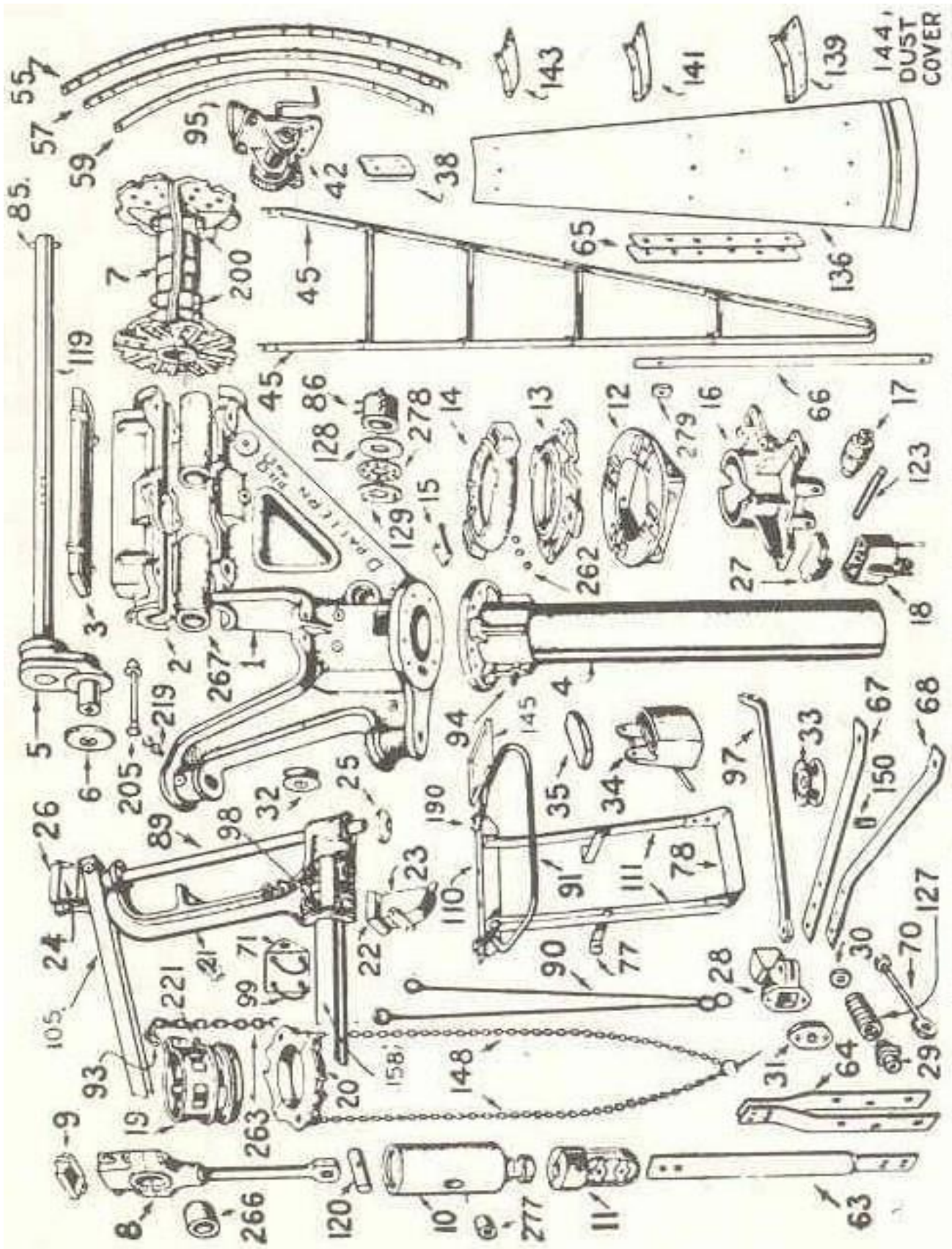
REPAIR Kit 16-30ft

CODE		PRICE
MQR1000MR	Mastpipe c/w stop brackets 16—18ft	\$ 6,700
MST1000MR	Mastpipe c/w stop brackets 20—22ft	\$ 8,400
MUW1000MR	Mastpipe c/w stop brackets 24, 27, 30ft	\$ 9900
MQR1000TR	Upper/lower Turntables complete 16—18ft	\$ 2,590
MST1000TR	Upper/lower Turntables complete 20—22ft	\$ 3,990
MUW1000TR	Upper/lower Turntables complete 24, 27, 30ft	\$ 4,890
MQR1000CR	Inner/Outer Pullout Collars complete 16—18ft	\$ 2 4 80
MST1000CR	Inner/Outer Pullout Collars complete 20—22ft	\$ 3,250
MUW1000CR	Inner/Outer Pullout Collars complete 24, 27, 30ft	\$ 4,580
MQR1000WR	Thrust Washer complete 16—18ft	\$ 1080
MST1000WR	Thrust Washer complete 20—22ft	\$ 1660
MUW1000WR	Thrust Washer complete 24, 27, 30ft	\$ 27 4 0
MQR1000RR	Roller complete with spindle 16—18ft	\$ 1440
MST1000RR	Roller complete with spindle 20—22ft	\$ 1740
MUW1000RR	Roller complete with spindle 24, 27, 30ft	\$ 2850

Paq

PARTS ILLUSTRATION

16, 18, 20, 22ft D PATTERN WINDMILLS



ONLY USE GENUINE COMET QUALITY PARTS

LIST OF PARTS 16, 18, 20, 22ft D PATTERN MILLS

CASTINGS

- 1 Main Casting
- 2 Bearing Cover on Main Casting
- 3 Oilbox Lid for Bearing Cover
- 4 Mast Pipe
- One-piece Crank and Pin (Fixed on shaft)
- 6 Crank Pin Washer
- 7 Hub Casting Clamp-on Type
- 8 Connecting Rod
- 9 Oilbox Lid for Conn. Rod (Until 1960)
- 10 Crosshead
- 11 Swivel
- 12 Tower Cap
- 13 Bottom Part of Ball-Bearing Turntable
- 14 Top Part of Ball-Bearing Turntable
- 15 Oilbox Lids for Turntable
- 16 Bottom Guide for Mast Pipe
- 17 Rollers for Bottom Guide
- 18 Oilboxes For Rollers
- 19 Inner Collar for Pullout
- 20 Outer Collar for Pullout
- 21 Vane Hinge Casting
- 22 Oilbox Lid for 23
- 23 Bottom Oilbox for Vane
- 24 Top Oilbox for Vane
- 25 Self-aligning Washer for Vane
- 26 Oilbox Lid for 24
- 27 Oilbox Lid for 18
- 28 Spring Buffer Casting
- 29 Buffer Studs
- 30 Washer on Buffer Bar
- 31 Buffer Box Flange
- 32 Chain Roller on Main Casting
- 33 Chain Roller on Pull-out Bars
- 34 Oilboxes for Crosshead (Until 1960)
- 35 Lids for Crosshead Oilboxes
- 38 Balance Weights
- 42 Pullout Winch complete

FLAT BAR PARTS

- 45 Wheel Arms – Complete Set
- 46 Wheel Arm – one only
- Rims – complete set
- 55 Outer Rims – complete
- 56 Outer Rim – one only
- 57 Middle Rims – complete
- 58 Middle Rim – one only
- 59 Inner Rims – complete
- 60 Inner Rim – one only
- 63 Steel Draw Bar
- 64 Connecting Straps on Steel Draw Bar

- 65 Fish Plates joining Mill Rods
- 66 Guide Bar
- 67 Top Bar for Pull-out Bracket
- 68 Bottom Bar for Pull-out Bracket 5
- 70 Eye Bolt for Spring Buffer
- 71 Buffer and Chain Plate
- 73 Check Rod Plate on Vane
- 74 Vane Straps – inner
- 74A Vane Straps – inner middle
- 75 Vane Straps – middle
- 76 Vane straps – outer
- 77 Stay for Inspection Frame to Main Casting
- 78 Foot Plate
- 105 Vane Stay Straps

ROUND BAR PARTS

- 85 Plain Pin through Shaft on Hub
- 86 Thrust Collar
- 89 Vane Hinge Rod
- 90 Check Rod for Vane
- 91 Guard Rail for Inspection Frame
- 93 Connecting Link for Pull-out Collars
- 94 Check Stud on Mast Pipe (Until 1959)
- 95 “U” Clips for Winch
- 97 Pull-out Bracket Stay
- 98 “U” Bolts for Vane Hinge Casting
- 99 “U” Bolts for 71

ANGLE STEEL PARTS

- 110 Support Angle for Inspection Frame
- 111 Side Angles for Footplate
- 112 Inspection Frame Complete

POLISHED STEEL PARTS

- 119 Driving Shaft (fitted with Crank & Pin)
- 120 Crosshead Pin
- 121 Cotter Pin for Crosshead Pin
- 123 Axles for Rollers on Bottom Guide

SPRING STEEL PARTS

- 127 Buffer Spring
- 128 Front Thrust Washer
- 129 Back Thrust Washer
- 130 Thrust Washer Complete (Front Back & 54 Balls with Cage)

GALVANISED IRON PARTS

- 134 Vane Sheet Complete
- 135 Sails – complete set
- 136 Sail – one only
- 137 Sail Brackets – complete set
- 138 Outer Sail Brackets – complete set
- 139 Outer Sail Bracket – one only
- 140 Middle Sail Brackets – complete set

PARTS ILLUSTRATION

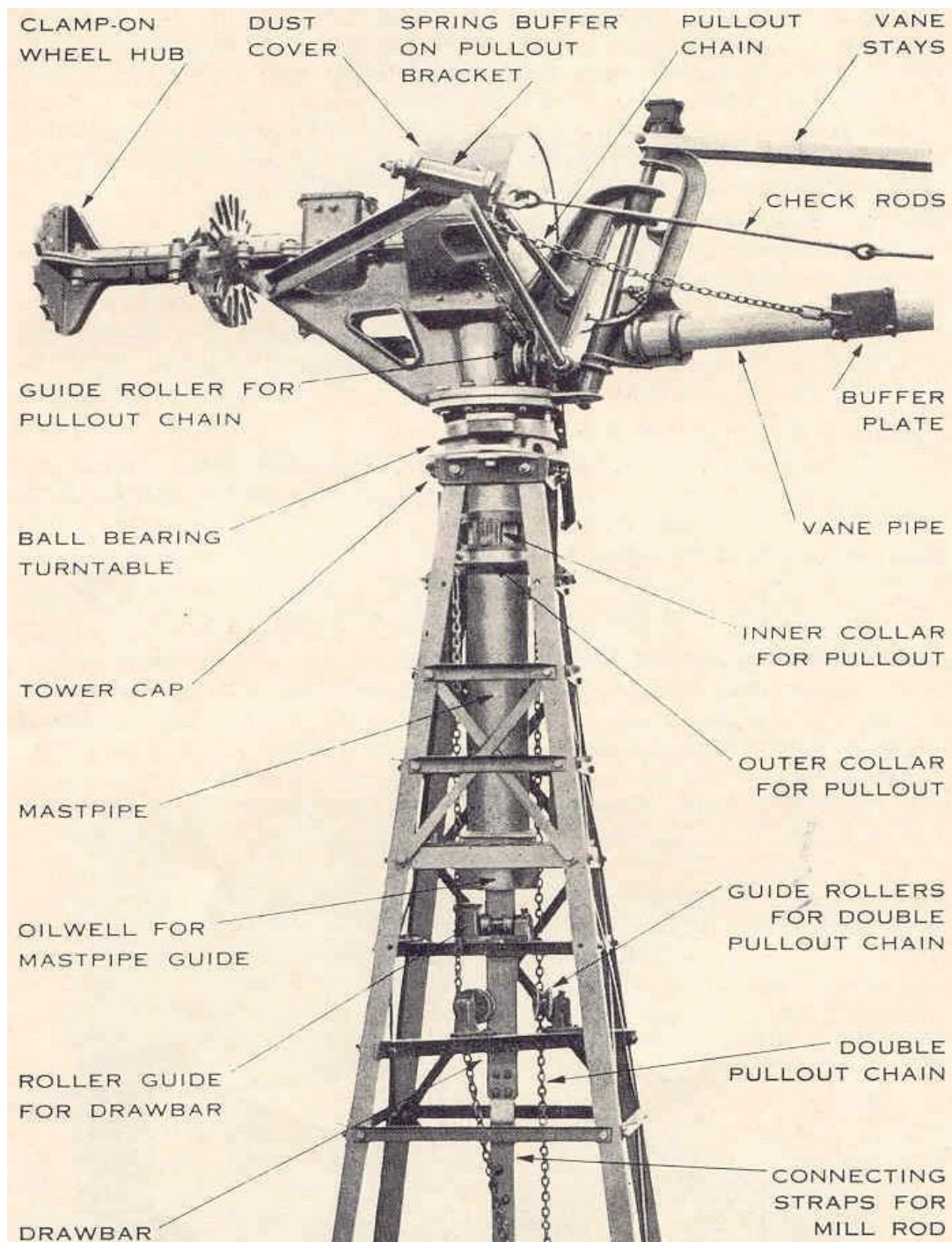
24, 27, 30ft D PATTERN WINDMILLS

HOW TO ORDER GENUINE COMET SPARE PARTS

When ordering GENUINE spare parts it is important to state:

1. Part Number
2. Name of Part
3. Size of Mill
4. Registered Serial Number of Mill*

* When any improvements are made in Comet Mills a proper record is kept in our Office. The alterations are recorded against the size and serial numbers of the mills that have the alterations, and also the period over which the alterations hold good. Delay is avoided if the serial number of the mill is supplied when ordering genuine spare parts which also ensures the genuine parts are correct. The size and registered serial number of COMET Mills are found on the side of the main casting, the vane sheet and driving shaft (crank).

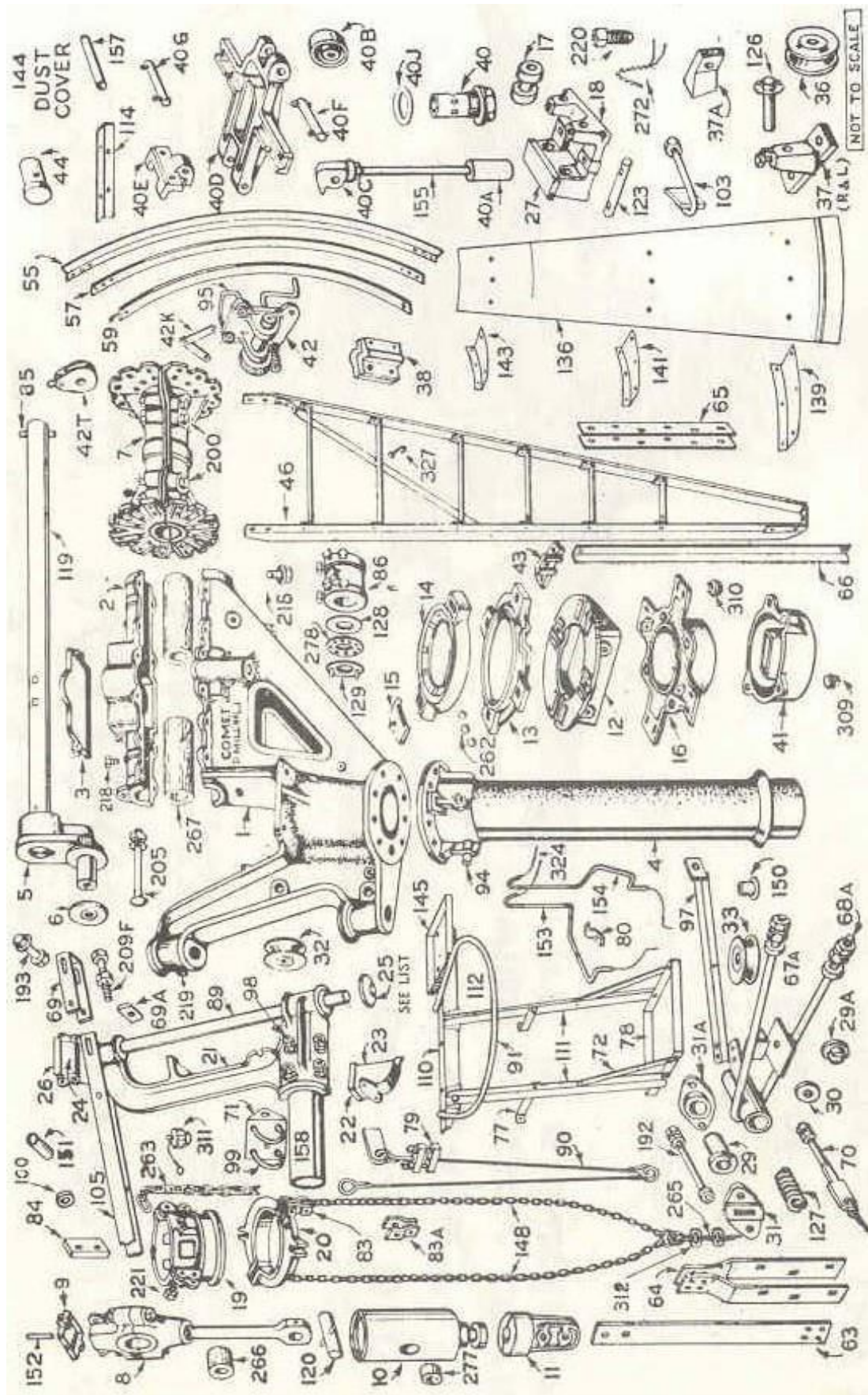


D' Pattern Mill, less wheel and vane. Note the totally enclosed design, simplicity of construction and great strength of all components.

ONLY USE GENUINE COMET QUALITY PARTS

PARTS ILLUSTRATION

24, 27, 30ft D PATTERN WINDMILLS



LIST OF PARTS 24, 27, 30ft D PATTERN MILLS

Product Codes:

MUU - 24' ONLY; MVV - 27'; MWW - 30' ONLY; MVW - 27', 30'; MUW - 24', 27' & 30'

CASTINGS

1 Main Casting
2 Bearing Cover on Main Casting
3 Oilbox Lid for Bearing Cover
4 Mast Pipe
5 One-piece Crank and Pin (Fixed on shaft)
6 Crank Pin Washer
7 Hub Casting Clamp-on Type
8 Connecting Rod
9 Oilbox Lid for Conn. Rod (Until 1960)
10 Crosshead
11 Swivel
12 Tower Cap
13 Bottom Part of Ball-Bearing Turntable
14 Top Part of Ball-Bearing Turntable
15 Oilbox Lids for Turntable
16 Bottom Guide for Mast Pipe
17 Rollers for Roller Guide
18 Roller Guide Spindle Bearing with Oilbox
18A Packing Pieces for Tower Rails
19 Inner Collar for Pullout – right half
19A Inner Collar for Pullout – left half
20 Outer Collar for Pullout
21 Vane Hinge Casting
22 Oilbox Lid for 23
23 Bottom Oilbox for Vane
24 Top Oilbox for Vane
25 Self-aligning Washer for Vane (27/30')
26 Oilbox Lid for 24
27 Oilbox Lid for 18
28 Spring Buffer Casting (27/30')
28A Tubular Spring Buffer Body with Pullout Bracket Arms, 67A and 68A, and Chain Guard, 146, welded on (24')
29 Buffer Studs
29A Washer for Spring on Eyebolt
30 Washer on Buffer Bar
31 Buffer Box Flange – front
31A Buffer Box Flange – back (24')
32 Chain Roller on Main Casting
33 Chain Roller on Pull-out Bars
36 Guide Roller for Pull-out chain
37 Guide Roller Brackets – 1 R.H., 1 L.H.
37A Packing Piece for Guide Roller Rail
38 Balance Weights for Wheel
39 Top Distance Casting between Chain Roller and Top Pullout Bracket Arm (27/30')
39A Bottom Distance Casting between Chain Roller and Bottom Pullout Bracket Arm (27/30')
40 Oil Pump Displacer Cylinder
40A Oil Pump Plunger
40B Oil Pump Cam Roller

40C Oil Pump Outlet Casting (Integral with Part 155 since 1952)
40D Oil Pump Rocker Arm & Distributor
40E Oil Pump Bracket for Rocker Arm
40F Oil Pump Knuckle Pins
40G Oil Pump Hinge Pin
40J Oil Pump Washer for Cylinder
41 Oil Well for Mast Pipe
42 Pullout Winch complete (Frame Barrel, Worm, Handle and Rope)
42A Winch Frame Casting for Pullout
42B Barrel of Winch
42C Worm
42D Handle
42K Rope Anchor Links above Winch
42R Wire Rope on Winch
42S Baseplate for Winch (44' x 30 Towers Up)
42T Pulley Block for Winch
43 Brackets on Tower for Guide Bars (Integral with Guide Bar from 1960)
44 Balance Weight for Vane Pipe

FLAT BAR PARTS

45 Wheel Arms – Complete Set
46 Wheel Arm – one only
54 Rims – complete set
55 Outer Rims – complete
56 Outer Rim – one only
57 Middle Rims – complete
58 Middle Rim – one only
59 Inner Rims – complete
60 Inner Rim – one only
63 Steel Draw Bar
64 Connecting Straps on Steel Draw Bar
65 Fish Plates joining Mill Rods
66 Guide Bars for Outer Collar
67 Top Bar for Pull-out Bracket (27/30')
68 Bottom Bar for Pull-out Bracket (27/30')
69 'U' Strap for Adjusting Vane Stays. (24' until 1952; 27/30' until 1953)
70 Eye Bolt for Spring Buffer
71 Buffer and Chain Plate
72 Flat Braces for Footplate
73 Check Rod Plate on Vane (welded on)
74 Vane Straps – inner
74A Vane Straps – inner middle
75 Vane Straps – middle
76 Vane straps – outer
77 Stay for Inspection Frame to Main Casting – long
77A Stay for Inspection Frame to Main Casting – short
78 Foot Plate

LIST OF PARTS 24, 27, 30ft D PATTERN MILLS

Product Codes:

MUU - 24' ONLY; MVV - 27'; MWW - 30' ONLY; MVW - 27', 30'; MUW - 24', 27' & 30'

79 Shackle on Check Rod to Vane 27/30' only – until 1953

80 Clip for Crosshead Oil Tubes

83 Connecting Links – Chain to Inner Collar

83A Connecting Links – Chain to Outer Collar

84 Inner Collar Guide Key

105 Vane Stays

ROUND BAR PARTS

85 Plain Pin through Shaft on Hub

86 Thrust Collar

89 Vane Hinge Rod

90 Check Rod for Vane

91 Guard Rail for Inspection Frame, Welded to Support Angle

93 Long Link – Pullout Collar to Conn. Link

94 Check Stud on Mast Pipe (Until 1959)

95 'U' Clips for Winch

97 Pull-out Bracket Stay

98 'U' Bolts for Vane Hinge Casting

99 'U' Bolts for 71

100 Spacer between Connecting Links

103 Hook Bolts for 107A

ANGLE STEEL PARTS

107 Support Rails for Roller Guide

107A Support Rails for Guide Roller

110 Support Angle for Inspection Frame

111 Side Angles for Footplate

112 Inspection Frame Complete

114 Stiffening Angle for Dust Cover

POLISHED STEEL PARTS

119 Driving Shaft (fitted with Crank & Pin)

120 Crosshead Pin

121 Cotter Pin for Crosshead Pin

123 Spindles for Roller Guide

126 Axles for Guide Rollers

SPRING STEEL PARTS

127 Buffer Spring

128 Front Thrust Washer

129 Back Thrust Washer

130 Thrust Washer Complete (Front Back & Balls with Cage)

GALVANISED IRON PARTS

134 Vane Sheet Complete

135 Sails – complete set

136 Sail – one only

137 Sail Brackets – complete set

138 Outer Sail Brackets – complete set

139 Outer Sail Bracket – one only

140 Middle Sail Brackets – complete set

141 Middle Sail Bracket – one only

142 Inner Sail Brackets – complete set

143 Inner Sail Bracket – one only

144 Dust Cover (With Oilbox from 1960)

145 Tool Tray

146 Chain Guard below 33

TUBE PARTS

150 Ferrule for Chain Roller

151 Spacer on Vane Stays

152 Oil Tube for Conn. Rod

153 Oil Tube for Crosshead – R.H

154 Oil Tube for Crosshead – L.H

155 Oil Pump Tube for Oil Plunger

157 Distance Pipe for Dust Cover

158 Vane Pipe

BOLTS FOR WHEEL

160 Arms to Hub Casting

161 Inner Rims to Arms

162 Middle Rims to Arms

163 Laps of Middle Rims

164 Outer Rims to Arms

165 Laps of Outer Rims

166 Sail Brackets to Rims

167 Sail to Sail Brackets

BOLTS FOR MILL HEAD & VANE

170 Roller Guide Support Rails to Tower

171 Footplate Stays to Main Casting

172 Footplate & Stays to Frame

172A Footplate Braces to Footplate

172B Footplate Braces to Side Angles

173 Pullout Collar to Connecting Links

174 Footplate Frame to Support

175 Guide Bar Bracket to Tower Rail

176 Guide Bars to Bottom Guide

177 Guide Bars to Guide Bar Bracket (Until 1960)

178 Inner Pullout Collar

179 Inner Pullout Collar Dowel Bolt

179A Inner Pullout Collar Dowel Bolt

180 Vane Straps and Stays to Pipe

181 Bottom Guide to Tower

182 Pullout Collar (Outer)

183 Connecting Straps to Draw Bar

184 Vane Sheet to Straps

185 Oil Well to Bottom Guide

186 Guide Roller Bracket to Support Angle

187 Chain Roller on Pull-out

188 Clamp Bolts – Vane Straps and Sheet to Pipe

189 Top Bracket Bar to Buffer Casting (27/30')

189A Bottom Bracket Bar to Buffer Casting (27/30')

191 Footplate support to Main Casting

192 Spring Buffer Body to Flanges (24')

192A Spring Buffer Body to Flange (27/30')

193 Vane Stays to Hinge Casting

194 Bottom Bar to Buffer Casting (27/30')

194A Stay to Buffer

195 Bottom Bar to Main Casting (27/30')

195A Stay to Main Casting

196 Top Bar to Buffer Casting (27/30')

196A Top Bar to Main Casting (27/30')

LIST OF PARTS 24, 27, 30ft D PATTERN MILLS

Product Codes:

MUU - 24' ONLY; MVV - 27'; MWW - 30' ONLY; MVW - 27', 30'; MUW - 24', 27' & 30'

197 Main Swivel
198 Main Bearing Cap – Long
198A Main Bearing Cap – Short
199 Top Distance Casting (39) to Angle (27/30')
199A Bottom Distance Casting (39A) to Angle (27/30')
200 Hub Casting
201 Connecting Rod
202 Bolts for Tool Tray
204 Connecting Straps to Mill Rod
205 Crank Pin Washer to Crank
206 Tower Cap to Legs
207 Turntable to Tower Cap
208 Chain Roller on Main Casting
209 Fish Plates
209F Adjusting Screw for 69 (24' until 1952)
(27/30' until 1953)
280 Mast Pipe to Main Casting
280A Mast Pipe to Main Casting – Fitted
287 Hinge Casting to Top Oilbox
288 Hinge Casting to Bottom Oilbox
289 Connecting Links to Long Link
325 Dust Cover to Main Casting
326 Dust Cover to Main Casting
328 Balance Weights on Wheel
328A Balance Weight on Vane
329 Roller Guide Casting to Rails
330 Chain Roller Bracket to Pullout Bracket (27/30')

LOOSE NUTS

211 Adjusting Screws for Vane (top)
212 Lock Nut for 209F
213 Buffer Eye Bolt
213A Nuts for Arms 67A & 68A (24')
214 Nuts for 98
214A Nuts for 99

SET SCREWS

215 Oil Draining Plug
216 Guide Roller Axle
216A Oil Level Set Screw
217 Thrust Collar
218 Top Cover to H. W. Bearings
219 Vane Hinge Rod Adjustor
220 Roller Guide Spindle
220A Roller Guide Spindle Set Screws with Oil Hole
221 Inner Collar Locking Screw
319 Set Screws for 318 (from 1960)

SPLIT PINS

230 Oilbox Cover on Top Vane Hinge

231 Oilbox Cover for Bearing Cover
232 Oilbox Cover for Bottom Vane Hinge
233 Oilpump Cam Roller
234 Eye Bolt on Buffer
235 Guide Roller Axles
236 Roller Guide Spindles
236A Conn. Rod Oilbox Lid (until 1960)
237 Turntable Oilbox Lid

PLAIN WASHERS

235A Washers for 235
239 Crank Pin Bolt Washer
242 Distance Washer for Eye Bolt
331 Washer under Chain Roller

LOCK WASHERS FOR WHEEL BOLTS

For Galvd. Bolts through Sails and Brackets.
For Bolts through Rims and Arms
For Bolts through Arms and Hub Casting
(Most of the other bolts in mill also have lock washers)

SUNDRIES

148 Lower Pullout Chains
229 Locking Wire for 280 & 280A
261 Steel Balls for Thrust Washer
262 Steel Balls for Turntable
263 Pull-out Chain from Vane
264 Wire for Oil Cup Lid Hinges
265 Pull-out Wire Rope
266 Bearing Bush for Connecting Rod
267 Bearing Bush for Driving Shaft
269 Mill Rods
272 Syphon Wicks for Oil Boxes – complete set
273 Syphon Wicks – Roller Guide Oilbox
274 Syphon Wick for Conn. Rod
276 Split Link for Pullout Chain
277 Bushes for Crosshead
278 Ball Cage for Thrust Washer
309 Filling Plug – Mast Pipe Oil Well
310 Draining Plug – Mast Pipe Oil Well
311 Brass Plug for Inner Collar Oilbox
312 Wire Rope Clips for 265
312A Thimbles for 265
315 Leather Washer for 215
318 Stop for Mast Pipe (from 1960)
324 Long Syphon Wicks for Crosshead Oil Tubes
327 Hook Bolts on Wheel Arms
337 Leather Washer for Oil Level Plug
338 Leather Washer between Hub and Main Casting
339 Leather Washer for 310

MILL RODS & CONNECTIONS

Prices exclusive of GST and Freight

GALVANISED FISHPLATES WITH NUTS & BOLTS

CODE		PRICE
COM1214	No. 1 Galvanised Fishplates	\$ 49.00
COM1215	No. 2 Galvanised Fishplates	\$ 69.00
COM1216	No. 3 Galvanised Fishplates	\$ 76.00
COM1217	No. 4 Galvanised Fishplates	\$ 82.00

STIRRUP CONNECTION WITH NUTS & BOLTS

CODE		PRICE
COM1218	No. 1 38mm — 1½ x ½" Hole	\$ 88.00
COM1219	No. 1 38mm — 1½ x ⅝" Hole	\$ 96.00
COM1220	No. 2 50mm — 2 x ⅝" Hole	\$ 112.00
COM1221	No. 3 65mm — 2½ x ⅝" Hole	\$ 128.00
COM1222	No. 3 65mm — 2½ x ¾" Hole	\$ 154.00
COM1223	No. 4 75mm — 3 x ¾" Hole	\$ 162.00
COM1224	No. 4 75mm — 3 x ⅞" Hole	\$ 178.00

SCREWED PUMPROD COUPLINGS

COM1225	½" Whitworth Brass Pumprod Coupling	\$ 46.00
COM1226	⅝" Whitworth Brass Pumprod Coupling	\$ 50.00
COM1229	1" Whitworth Brass Pumprod Coupling	\$ 59.00
COM1230	½" x ⅝" Brass Pumprod Coupling	\$ 64.00
COM1231	½" x ¾" Brass Pumprod Coupling	\$ 78.00
COM1232	⅝" x ¾" Brass Pumprod Coupling	\$ 81.00
COM1233	⅝" x ⅞" Brass Pumprod Coupling	\$ 83.00
COM1234	⅝" x 1" Brass Pumprod Coupling	\$ 87.00
COM1235	¾" x ⅞" Brass Pumprod Coupling	\$ 87.00
COM1236	¾" x 1" Brass Pumprod Coupling	\$ 88.00
COM1237	⅞" x 1" Brass Pumprod Coupling	\$ 89.00

KEEPER RINGS FOR BALL JOINTS

CODE		PRICE
COM1370	No. 2 Steel Keeper Ring	\$ POA
COM1371	No. 3 Steel Keeper Ring	\$ POA
COM1372	No. 4 Steel Keeper Ring	\$ POA
COM1373	No. 4 HD Steel Keeper Ring	\$ POA
COM1374	No. 2 Bronze Keeper Ring	\$ 42.00
COM1375	No. 3 Bronze Keeper Ring	\$ 48.00
COM1378	No. 4 Bronze Keeper Ring	\$ 52.00
COM1379	No. 4 HD Bronze Keeper Ring	\$ 58.00

PUMPRODS, JOINTS & CONNECTIONS

STEEL PUMPRODS

Prices quoted are exclusive of GST and Freight.

SOLID STEEL PUMPRODS THREADED (NEW DESIGN)

CODE	DESCRIPTION	SIZE	PRICE ex GST
COM1269	1/2" with 5/8" Thread Combo Mild Steel Pumprod		\$264.00
COM1271	5/8" with 3/4" Thread Combo Mild Steel Pumprod	3/4"	\$264.00
COM1273	3/4" with 1" Thread Combo Mild Steel Pumprod	1"	\$264.00

SOLID STEEL PUMPRODS PIPE WELD (NEW DESIGN)

CODE	DESCRIPTION	SIZE	PRICE ex GST
COM1281	1/2" Mild Steel Pumprod (No Thread)	1/2"	\$205.00
COM1283	5/8" Mild Steel Pumprod (No Thread)	5/8"	\$205.00
COM1285	3/4" Mild Steel Pumprod (No Thread)	3/4"	\$215.00

HARDWOOD PUMPRODS WITH STEEL BALL JOINTS

CODE	DESCRIPTION	SIZE
	NO LONGER AVAILABLE	1 3/4" x 1
		1 3/4" x 1 1/4"
		2 x 1 1/2"
		2 1/2" x 1 1/2"

HARDWOOD PUMPRODS WITH BRONZE BALL JOINTS

CODE	DESCRIPTION	SIZE	
COM1256	45mm x 25mm x 6.5m Hardwood Pumprod / No 2 Bronze Ball Joints	1 3/4" x 1	\$ 280.00
COM1258	45mm x 32mm x 6.5m Hardwood Pumprod / No 3 Bronze Ball Joints	1 3/4" x 1 1/4"	\$ 310.00
COM1260	50mm x 40mm x 6.5m Hardwood Pumprod / No 4 Bronze Ball Joints	2 x 1 1/2"	\$ 340.00
COM1262	65mm x 40mm x 6.5m Hardwood Pumprod / No 4 HD Bronze Ball Jnts	2 1/2" x 1 1/2"	\$ 350.00

PUMPRODS, JOINTS & CONNECTIONS



BOX AND PIN JOINTS FOR PIPE PUMPRODS

EX GST

NO LONGER AVAILABLE

POA

POA

TAPERED M/F PLUNGER ROD CONNECTIONS

COM1354 M/F Plunger Rod Connection 7/8" Whit.Shank

\$178

COM1355 M/F Plunger Rod Connection 1" Whit.Shank

\$178

TAPERED M/F PLUNGER ROD CONNECTIONS (WELD)

COM1359 M/F Plunger Rod Connection Weld In

\$178

COM1360 M/F Plunger Rod Connection Weld In

\$178



STEEL BALL JOINTS FOR WOOD PUMPROD

NO LONGER AVAILABLE

\$ NA

\$ NA

\$ NA

\$ NA

BRONZE BALL JOINTS FOR WOOD PUMPROD

COM1314 No 2 Bronze Ball Joint with keeper

\$ 330.00

COM1315 No 3 Bronze Ball Joint with keeper

\$ 400.00

COM1316 No 4 Bronze Ball Joint with keeper

\$ 465.00

COM1317 No 4 HD Bronze Ball Joint with keeper

\$ 495.00

STEEL BALL JOINTS FOR STEEL PUMPRODS

\$

\$

\$

STEEL BALL JOINTS FOR STEEL PUMPRODS

NO LONGER AVAILABLE

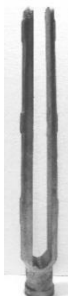
\$

\$

\$

\$

BRONZE FORK CONNECTIONS



COM1325 No 2 Bronze Fork Connection Tapped 5/8" Whit.

\$ 310.00

COM1326 No 2 Bronze Fork Connection Tapped 3/4" Whit.

\$ 325.00

COM1327 No 3 Bronze Fork Connection Tapped 3/4" Whit.

\$ 335.00

COM1328 No 3 Bronze Fork Connection Tapped 7/8" Whit.

\$ 355.00

COM1329 No 4 Bronze Fork Connection Tapped 7/8" Whit.

\$ 395.00

COM1330 No 4 Bronze Fork Connection Tapped 1" Whit.

\$ 405.00

PIPE AND CASING CLAMPS



CODE DESCRIPTION

COMBINED PIPE & CASING CLAMP

		Size Inch	PRICE ex GST
COM1450	125mm x 32mm Combined Pipe & Casing Clamps	5 x 1¼"	\$ 995.00
COM1451	125mm x 40mm Combined Pipe & Casing Clamps	5 x 1½"	\$ 995.00
COM1452	125mm x 50mm Combined Pipe & Casing Clamps	5 x 2"	\$ 995.00
COM1453	125mm x 65mm Combined Pipe & Casing Clamps	5 x 2½"	\$ 1195.00
COM1454	125mm x 80mm Combined Pipe & Casing Clamps	5 x 3"	\$ 1195.00
COM1455	150mm x 32mm Combined Pipe & Casing Clamps	6 x 1¼"	\$ 1425.00
COM1456	150mm x 40mm Combined Pipe & Casing Clamps	6 x 1½"	\$ 1425.00
COM1457	150mm x 50mm Combined Pipe & Casing Clamps	6 x 2"	\$ 1425.00
COM1458	150mm x 65mm Combined Pipe & Casing Clamps	6 x 2½"	\$ 1425.00
COM1459	150mm x 80mm Combined Pipe & Casing Clamps	6 x 3"	\$ 1425.00

The two larger castings of this 3-piece clamp are rested on and clamped to the top of the bore casing and the column pipe is then centrally clamped in the upper portion. Thus the bore is almost completely covered. The sizes for 5 or 6" casing take 1¼, 1½, 2, 2½ and 3" pipe.

HEAVY PIPE CLAMP (Max. Load 150M)

Cast Iron and Steel



COM1460	50mm Heavy Pipe Clamp	2"	\$ 260.00
COM1461	65mm Heavy Pipe Clamp	2½"	\$ 270.00
COM1462	80mm Heavy Pipe Clamp	3"	\$ 280.00

These exceptionally strong clamps are made in three sizes for 2, 2½ and 3" pipe. The cast iron gripping blocks are bored and grooved to provide a maximum hold on the pipe and are supported by two pieces of heavy angle steel. The angles are provided with holes for attaching to a foundation if necessary.

CONTACT DETAILS:

COMET WINDMILLS AUSTRALIA PTY LTD

PO BOX 340

MACKSVILLE NSW 2447

PH: 02 6568 3711

FAX: 02 6568 3722

email: sales@cometwindmills.com.au

web: www.cometwindmills.com.au



*The Comet Windmill,
an icon of inland Australia.*

Windmills are scattered all over the Australian continent like tireless sentinels standing guard over precious water supplies that give and sustain life. The Comet is a fitting symbol of the Australian Outback - representing perseverance and sustainability in a harsh environment, a sense of timelessness, and the contribution to the Outback that remains superior....that is why Comet is still....Australia's Leading Mill.

